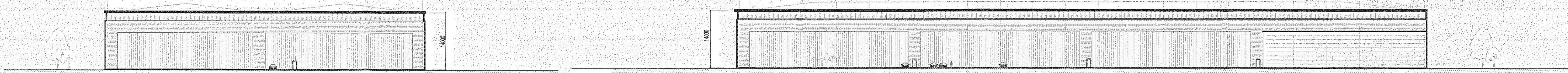


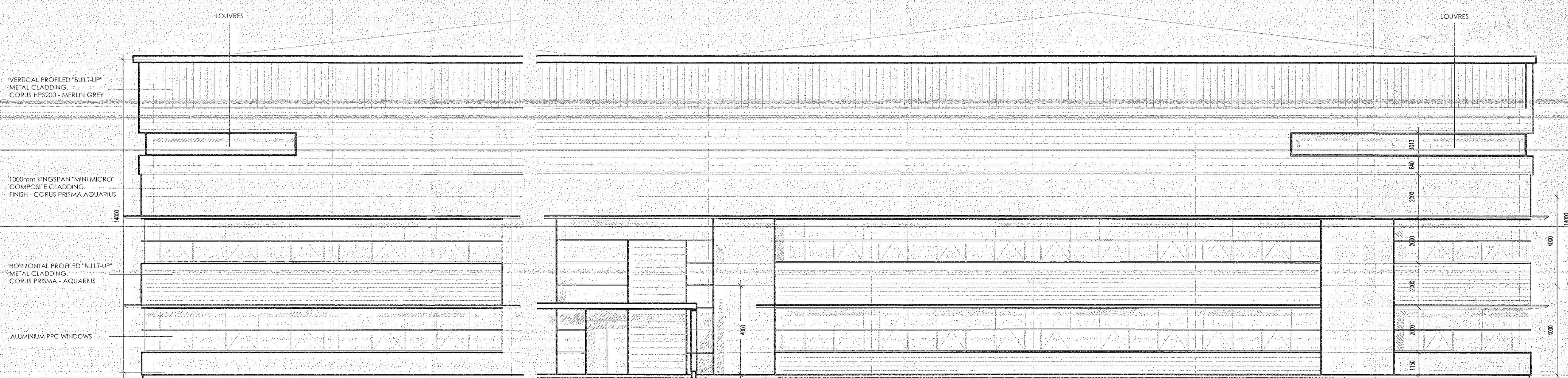
NORTH ELEVATION

EAST ELEVATION



WEST ELEVATION

SOUTH ELEVATION



OFFICE ELEVATION (NORTH)

OFFICE ELEVATION (EAST)

**UNIT D - ELEVATIONS
WYNYARD HS120**

STOCKTON BOROUGH COUNCIL
PLANNING
10 AUG 2007
DATE RECEIVED

07/2407/-

**WYNYARD HS120
UNIT D
ELEVATION**

PLANNING

A 15.05.07 DRAWING NOTE UPDATED FROM 'PRELIMINARY' TO 'PLANNING' AD
REV DATE DRAWN BY

FletcherArchitects
Designers & Master Planners

UNITS 1 & 2 RIVERSIDE MEWS
COMMERCIAL STREET
MANCHESTER M15 4RQ
T +44(0)161 838 5360
F +44(0)161 838 5361
office@fletcherarchitects-uk.com
www.fletcherarchitects-uk.com

PROPOSED COMMERCIAL DEVELOPMENT
for WYNYARD

UNIT D - ELEVATIONS
STATUS P PRELIMINARY 17.01.07
DRAWN: SHP CHECKED BY: 1:100/500@A1

1562 - PL18 A

SCALE 1:100/500@A1